

20. The Curse of Gluten

Celiac disease



Scan to learn
the process!



GLUE

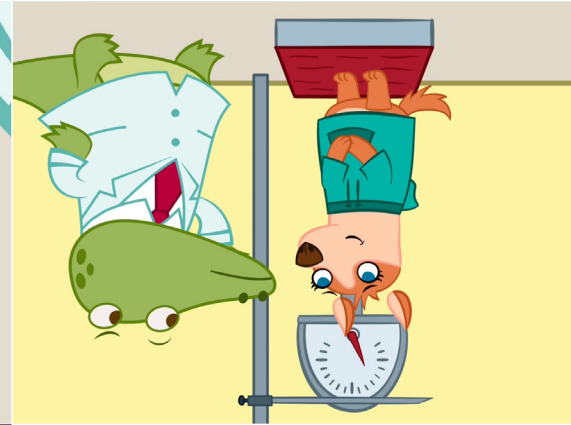
Cut through the black line 

7

Croco Doc looks inside Bea's mouth and notices some white sores. She seems to be malnourished. This means that her body isn't getting the things it needs to be healthy. Croco Doc is sure that Bea has celiac disease.

9

He then weighs her, but she has not gained any weight, so why is her belly so big?



Bea is eating her favorite cereal for breakfast, just like every morning.

Her parents, however, are a little worried.

Sometimes her favorite cereal makes her feel sick.

A couple minutes later, Bea really has to go to the bathroom. She has diarrhea!

She has been feeling this way for many days, so her father decides to take her to the doctor.

Croco Doc examines Bea and notices that she has a very swollen belly.

2

3

4

5

Scan to learn
the process!



GLUE

CROCO DOC

crocodoc.tv



www.crocodoc.tv

Get the full collection
of Croco Books on our
website!

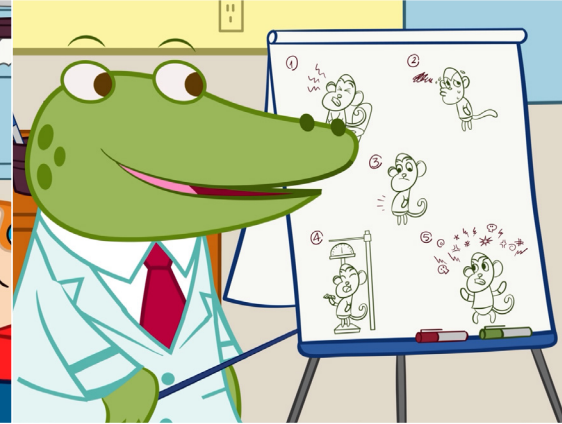


People with celiac disease are allergic to gluten. Gluten is a protein found in many grains. People with celiac disease can not eat foods such as bread, pizza, pasta, pastries, and many types of cereal.

Luckily, they can still eat fruit, vegetables, meat, fish, and nuts.



To make sure Bea has celiac disease, she has to do a blood test. Bea feels just a small pinch. It barely hurt!



All the symptoms point to celiac disease: diarrhea, tiredness, a swollen belly, weight loss...and a grumpy attitude!



Luckily, nowadays there are lots of special foods for people with this disease. Like the pizza that Bea and her family are going to eat on their picnic!

They have the results two days later. Bea has celiac disease!